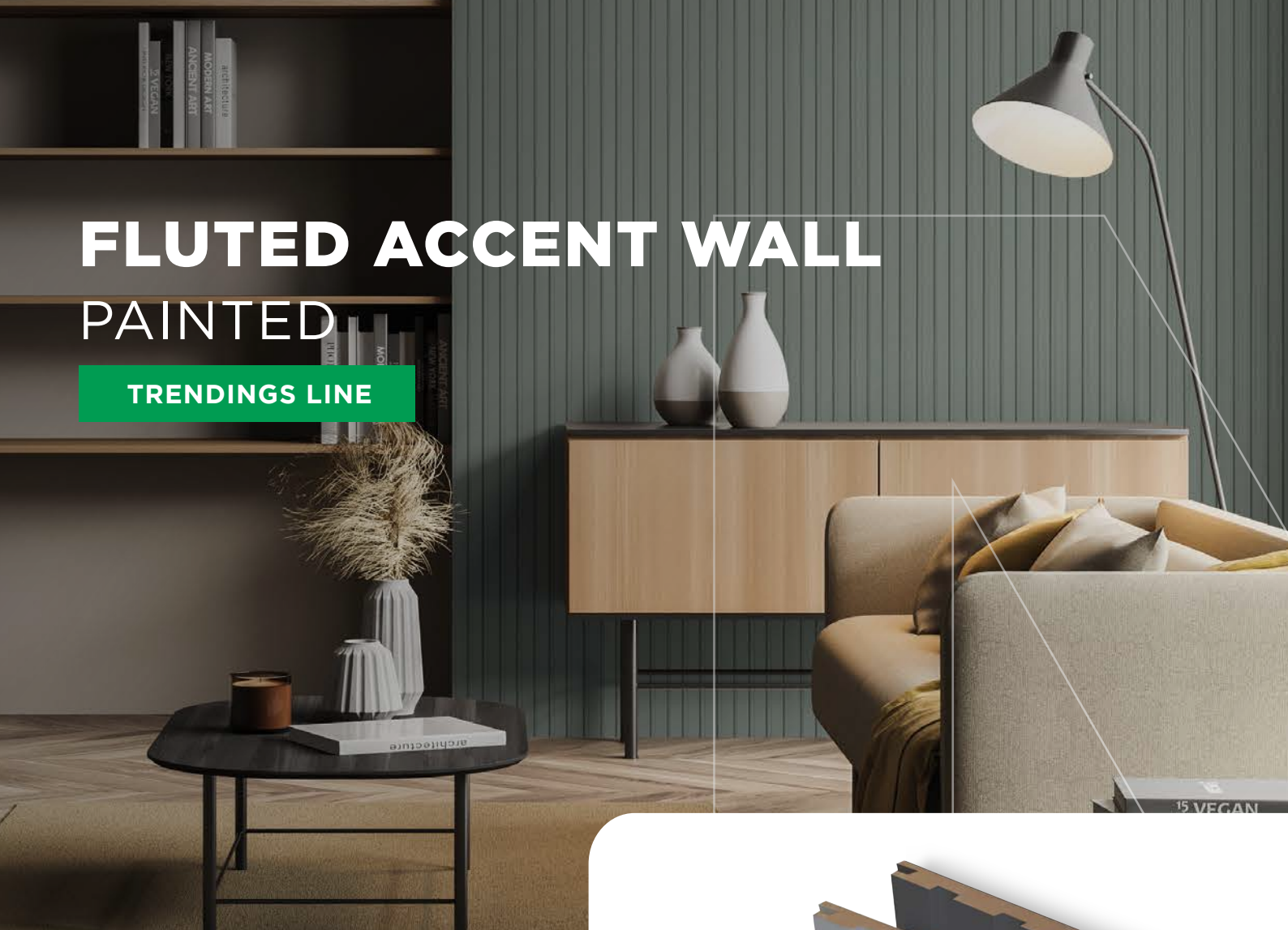


FLUTED ACCENT WALL PAINTED

TRENDINGS LINE



Elevate any room instantly with our decorative panel, boasting sleek grooves and flutes for a modern, elegant touch.

Its easy installation offers a quick way to infuse your space with contemporary sophistication.



www.masisa.com

TRENDINGS LINE
Collections that inspire.

MASISA

CERTIFICATIONS AND FEATURES



RESPONSIBLE
PRODUCTION



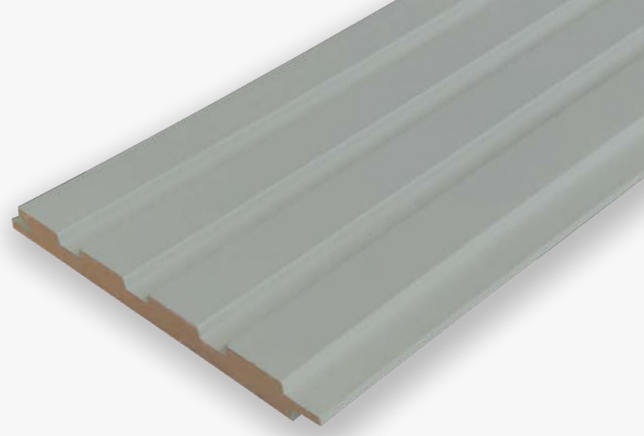
FINISHED
PRODUCT



TONGUE & GROOVE
SYSTEM



QUICK
INSTALLATION

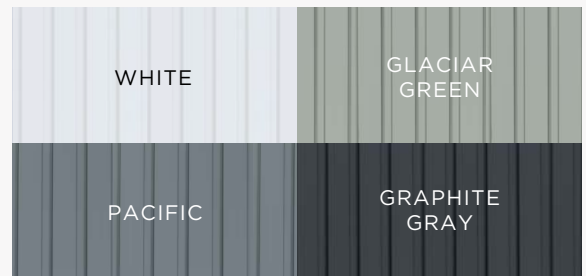


FLUTED ACCENT WALL PAINTED

COMMON USES

Recommended to be used as wall coverings and ceilings, mounted either on wooden or galvanized profiles partitions, masonry or concrete, among others. It is recommended to be used in moisture free areas. This is an ideal product to decorate homes, offices, commercial and institutional spaces, providing a high finish and warmth.

AVAILABLE DESIGNS



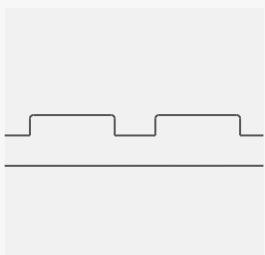
FEATURES

- Tongue and groove system for easy installation.
- Decorative items, such as mirrors, wall frames and others can be hung on it.
- Final product, it doesn't require any painting or polishing.

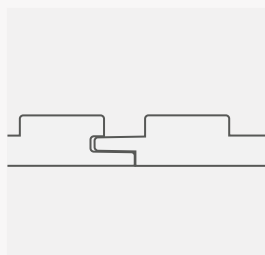
SIZES	96 x 6.2 inches	PACKING	4 pieces
COVERAGE	16.7 sq. feet	PACKAGE WEIGHT	32 lbs per package
FINISHED SURFACE	Colored	ACTUAL THICKNESS	0.59 inches
ACTUAL WIDTH	5.9 inches	JOINT SYSTEM	Tongue and groove system

EDGE PROFILE

Tongue and groove system



FLUTED



JOINT SYSTEM

FLUTED



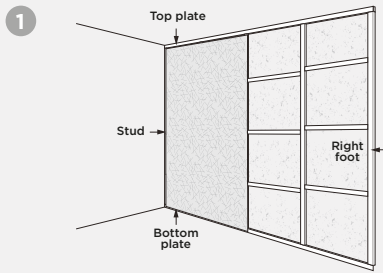
96 in.

6.2 in.



ASSEMBLY INSTRUCTIONS ON WOOD

WOODEN FRAMING

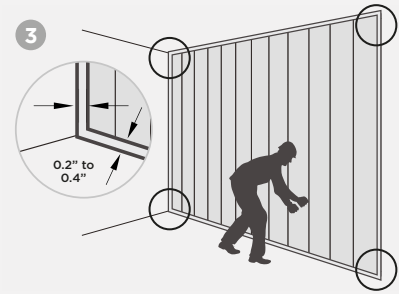


Assemble panels directly onto a wooden frame. For improved leveling, insulation, and stiffness, cover the frame using MDF/MDP board.

PANEL FIXING



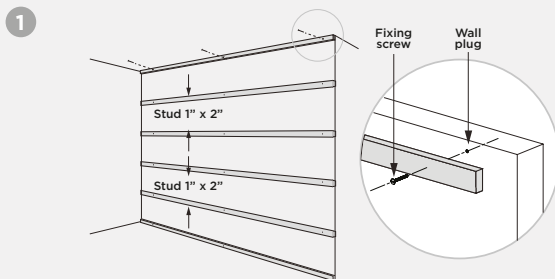
Attach panels with high elasticity adhesive. For extra hold, use 0.13" flat head screws or finishing nails at the edges of fluted panels or on the painted surface of fluted panels.



Leave a 0.2" - 0.4" gap around the perimeter. Avoid direct floor installation; maintain at least 0.4" gap to prevent fluid contact.

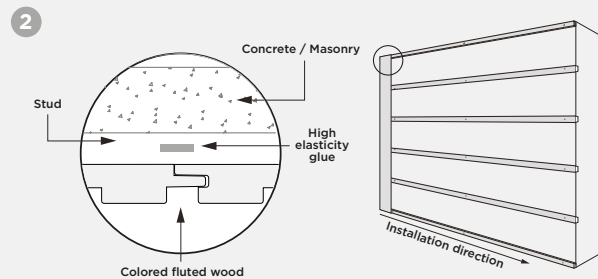
ASSEMBLY INSTRUCTIONS ON CONCRETE MASONRY

WOODEN FRAMING

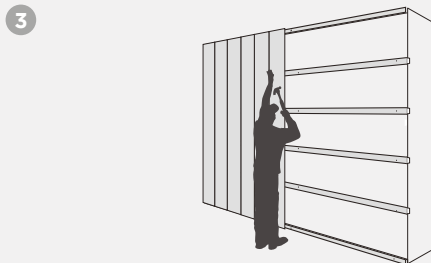


For leveling and insulation, cover walls with MDF's or wood furring strips every 16". Do not install on irregular or humid walls (moisture content should be below 12%)

PANEL FIXING



Install wood panels from left to right. Ensure the first piece is level, then secure with adhesive. For added stability, use 0.13" flat head screws or finishing nails at the edges or on the Melamine surface.

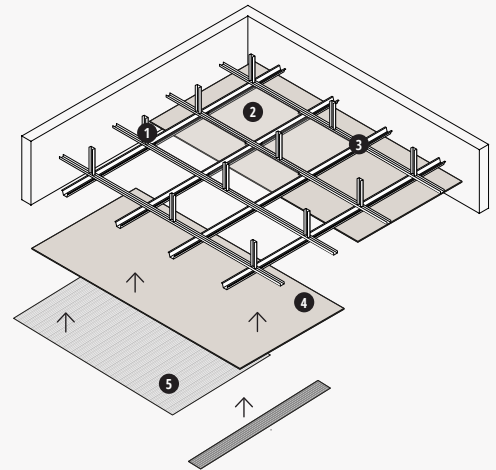


Install additional wood panels using a rubber hammer or wooden block. Avoid striking the shiplap edge directly with the hammer as this could cause damage.

ASSEMBLY INSTRUCTIONS INSTALLATION TO CEILINGS

To install panels to ceilings, first fix 1" x 2" pine pieces on the base framing, with a gap no wider to 40 cm. Then, install Masisa Ecoplac OLB lining or other surface.

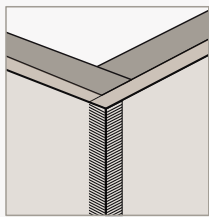
Finally, stick directly on panel with high elasticity adhesive. Fixing must be strenghten with 0.13" flat head screws on edges of Fluted panels or on melamine surface on micro fluted panels.



1. Rigid tensor
2. Insulation
3. Mounting profile
4. Ecoplac Masisa lining
5. Fluted or micro fluted panel

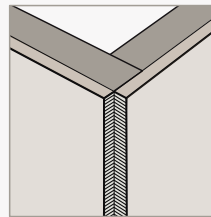
RECOMMENDATION FOR CORNER JOINTS

OUTER CORNER JOINT



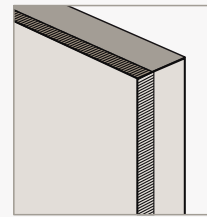
For better finishing and protection, it is recommended to use a aluminum angle of the same thickness as the product.

INNER CORNER JOINT



For better finishing and protection, it is recommended to use a aluminum angle of the same thickness as the product.

SHIPLAP EDGE



When covering horizontal or vertical edges, it is recommended to use a mill finished aluminium solid of the same thickness as the product at least 0.4" wide or wider if necessary.

IMPORTANT RECOMMENDATIONS

- It is essential to acclimatize the panels during 48 hours before its mounting and in the place where it will be installed.
- The place where the panel will be installed must be moisture free. In every construction project, it is recommended to install the panel after finishing the construction and when the wet works have been finished.
- It is recommended to install Ecoplac Masisa before lining installation when: Walls are not well leveled. The wood piece shafts are not placed to the required distance. Higher insulation is needed.
- Mounting wall must be clean and smooth before lining installation. Remove any roughness of 0.07" or more.
- When sawing panels, if manual saw is used, make the sawing with the decorative face upwards, and if electric saw is used, make the cut with the decorative face downwards.
- Sawing must be made with a WIDIA disc, 86 teeth with rip blades, following the rotation speed specifications v/s moving speed provided by the manufacturer of each equipment.
- For a correct assemble and joint fixing, floor and wall installation level must be perfect. On the contrary, incorrect joints will be produced.
- If better insulation features are needed for the panels, it is possible to install an insulation product before installing the lining.
- It is recommended to use a mounting addeisive based on polyurethane, with elastic properties, moisture resistant and fast drying.
- 0,2" to 0,4" perimeter gap is recommended per side.
- Do not install direct to floor (due to contact with fluids), considering a gap not less to 0,4".

MASISA®

U.S office: 1855 Piedmont Rd. Ste 101 Marietta, GA 30066.
Sales team: masisaua@masisa.com

www.masisa.com

Masisa reserves the right to modify the product properties without prior notice.

Information updated to April 2024.

FLUTED AND MICRO FLUTED ACCENT WALL WOODGRAIN



Decorative panel manufactured in thermo fluid laminate to decorate walls and interior ceilings easily, fast and clean.

This sheet incorporates a fluted face which allows a continuous, contemporary and elegant design.



CERTIFICATIONS AND FEATURES



RESPONSIBLE
PRODUCTION



FINISHED
PRODUCT



SHIPLAP DESIGN
PERFECT FIT



QUICK
INSTALLATION

FLUTED AND MICRO FLUTED ACCENT WALL

COMMON USES

Recommended to be used as wall coverings and ceilings, mounted either on wooden or galvanized profiles partitions, masonry or concrete, among others. It is recommended to be used in moisture free areas. This is an ideal product to decorate homes, offices, commercial and institutional spaces, providing a high finish and warmth.

AVAILABLE DESIGNS



CARVALO



BOSCO

FEATURES

- Shiplap edge design that eases its assembly.
- Decorative items, such as mirrors, wall frames and others can be hung on it.
- Final product, it doesn't require any painting or polishing.

SIZES 97.6 x 8.6 inches

COVERAGE 5.81 sq. feet

FINISHED SURFACE Melamine

ACTUAL WIDTH 8.4 inches

PACKING 1 piece

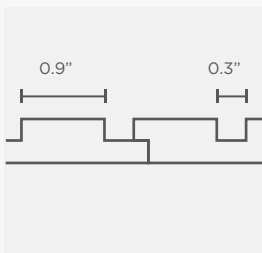
PACKAGE WEIGHT 8.91 lbs per package

ACTUAL THICKNESS 0.47 inches

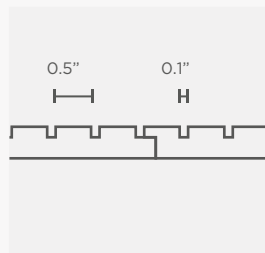
JOINT SYSTEM Shiplap design

EDGE PROFILE

Shiplap design



FLUTED



MICRO FLUTED

FLUTED



8.6 in

97.6 in



MICRO FLUTED



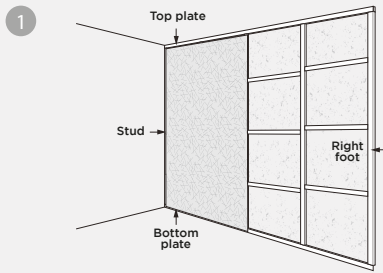
8.6 in

97.6 in



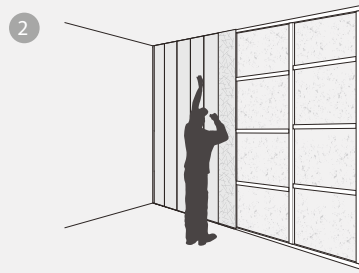
ASSEMBLY INSTRUCTIONS ON WOOD

WOODEN FRAMING

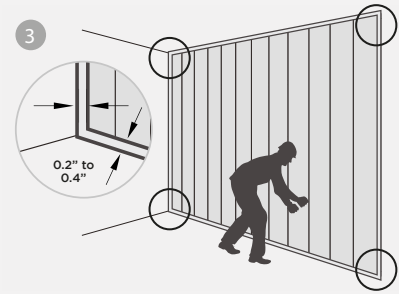


Assemble panels directly onto a wooden frame. For improved leveling, insulation, and stiffness, cover the frame using MDF/MDP board.

PANEL FIXING



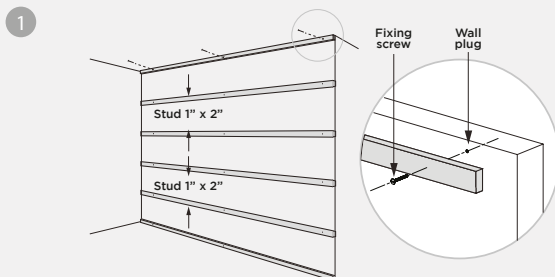
Attach panels with high elasticity adhesive. For extra hold, use 0.13" flat head screws or finishing nails at the edges of fluted panels or on the melamine surface of fluted panels.



Leave a 0.2-0.4" gap around the perimeter. Avoid direct floor installation; maintain at least 0.4" gap to prevent fluid contact.

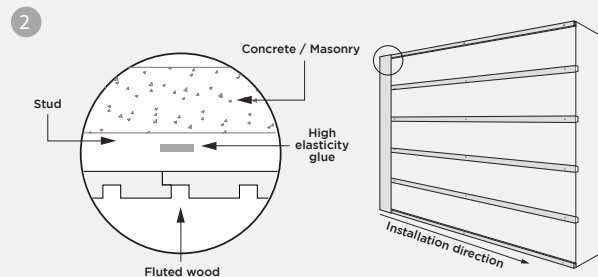
ASSEMBLY INSTRUCTIONS ON CONCRETE MASONRY

WOODEN FRAMING

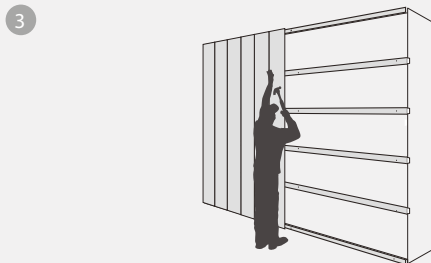


For leveling and insulation, cover walls with MDF's or wood furring strips every 16". Do not install on irregular or humid walls (moisture content should be below 12%)

PANEL FIXING



Install wood panels from left to right. Ensure the first piece is level, then secure with adhesive. For added stability, use 0.13" flat head screws or finishing nails at the edges or on the Melamine surface.

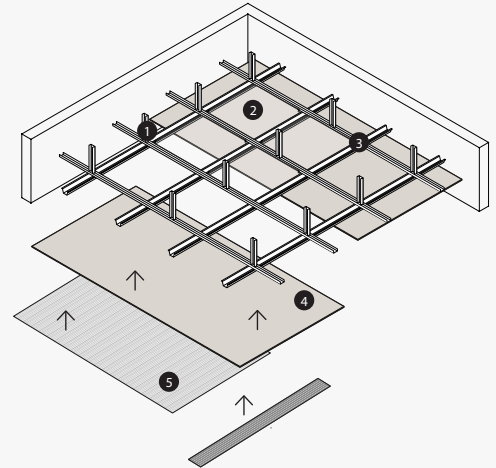


Install additional wood panels using a rubber hammer or wooden block. Avoid striking the shiplap edge directly with the hammer as this could cause damage.

ASSEMBLY INSTRUCTIONS INSTALLATION TO CEILINGS

To install panels to ceilings, first fix 1" x 2" pine pieces on the base framing, with a gap no wider to 40 cm. Then, install Masisa Ecoplac OLB lining or other surface.

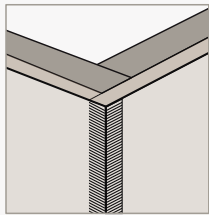
Finally, stick directly on panel with high elasticity adhesive. Fixing must be strenghten with 0.13" flat head screws on edges of Fluted panels or on melamine surface on micro fluted panels.



1. Rigid tensor
2. Insulation
3. Mounting profile
4. Ecoplac Masisa lining
5. Fluted or micro fluted panel

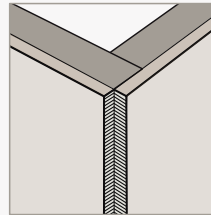
RECOMMENDATION FOR CORNER JOINTS

OUTER CORNER JOINT



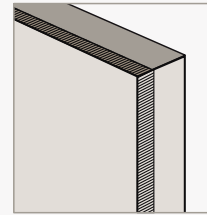
For better finishing and protection, it is recommended to use a aluminum angle of the same thickness as the product.

INNER CORNER JOINT



For better finishing and protection, it is recommended to use a aluminum angle of the same thickness as the product.

SHIPLAP EDGE



When covering horizontal or vertical edges, it is recommended to use a mill finished aluminium solid of the same thickness as the product at least 0.4" wide or wider if necessary.

IMPORTANT RECOMMENDATIONS

- It is essential to acclimatize the panels during 48 hours before its mounting and in the place where it will be installed.
- The place where the panel will be installed must be moisture free. In every construction project, it is recommended to install the panel after finishing the construction and when the wet works have been finished.
- It is recommended to install Ecoplac Masisa before lining installation when: Walls are not well leveled. The wood piece shafts are not placed to the required distance. Higher insulation is needed.
- Mounting wall must be clean and smooth before lining installation. Remove any roughness of 0.07" or more.
- When sawing panels, if manual saw is used, make the sawing with the decorative face upwards, and if electric saw is used, make the cut with the decorative face downwards.
- Sawing must be made with a WIDIA disc, 86 teeth with rip blades, following the rotation speed specifications v/s moving speed provided by the manufacturer of each equipment.
- For a correct assemble and joint fixing, floor and wall installation level must be perfect. On the contrary, incorrect joints will be produced.
- If better insulation features are needed for the panels, it is possible to install an insulation product before installing the lining.
- It is recommended to use a mounting addeisiveis based on polyurethane, with elastic properties, moisture resistant and fast drying.
- 0,2" to 0,4" perimeter gap is recommended per side.
- Do not install direct to floor (due to contact with fluids), considering a gap not less to 0,4".

MASISA®

U.S office: 1855 Piedmont Rd. Ste 101 Marietta, GA 30066.
Sales team: masisaua@masisa.com

www.masisa.com

Masisa reserves the right to modify the product properties without prior notice.

Information updated to April 2024.